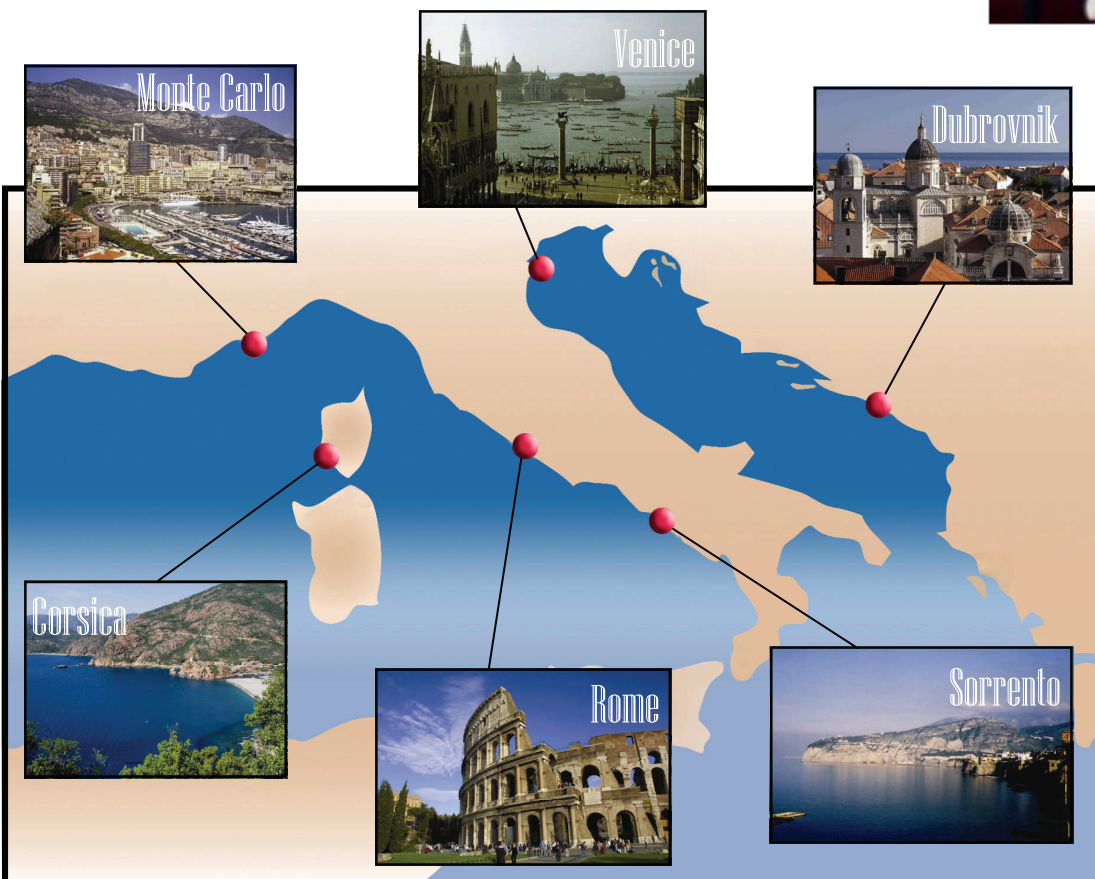




Regent
SEVEN SEAS CRUISES

Mediterranean Cruise
May 8—15, 2007



SEVEN SEAS NAVIGATOR



Accolades

**Readers of Condé Nast Traveler magazine
voted Regent Seven Seas Cruises #1 Cruise
Line in the publication's 19th annual
Readers' Choice Awards poll**

Best Luxury Cruise Line
-Porthole Magazine
(2001 - 2005)

Spas by renowned Carita of Paris
-Rated #1 cruise spa by Condé Nast Traveler
(2006)

Date	Port	Arrival	Departure
May 8	Venice	Embarkation 3:00 PM	
May 9	Venice		5:00 PM
May 10	Dubrovnik	11:00 AM	9:30 PM
May 11	At Sea		
May 12	Rome / Civitavecchia	9:00 AM	8:00 PM
May 13	Sorrento	8:00 AM	6:00 PM
May 14	Ajaccio	Noon	6:00 PM
May 15	Monte Carlo	8:30 AM	

For complete details contact:

Mr. Steve Bloss
Worldwide Travel & Cruise Associates, Inc
150 S. University Dr. Ste E
Plantation, FL 33324
1 (954) 452-8800
sbloss@cruiseco.com





SEVEN SEAS NAVIGATOR



PORTS OF CALL

VENICE - THE MOST ROMANTIC CITY

- OVERNIGHT IN VENICE WITH THE SHIP AS OUR HOTEL
- SEE THE INCOMPARABLE ST. MARKS SQUARE AND DOGES PALACE
- TAKE A ROMANTIC GONDOLA RIDE ON THE GRAND CANAL

DUBROVNIK - THE “NEW” RIVIERA

- THE PEARL OF THE ADRIATIC
- STROLL THROUGH THE ANCIENT WALLED CITY
- CROATIAN WINE TASTING WITH THE BEST WINES IN THE MEDITERRANEAN

ROME AND THE VATICAN MUSEUMS

- VISIT THE COLISEUM, PANTHEON, FORUM, TREVI FOUNTAIN, VATICAN AND MUCH MORE
- WORLD CLASS SHOPPING AND LIVING “LA DOLCE VITA”

SORRENTO - AMALFI COAST / ISLE OF CAPRI

- CRUISE ALONG THE CHIC AMALFI COAST WITH A VISIT TO THE CLIFF-SIDE TOWN OF POSITANO
- VISIT POMPEII AND THE REMARKABLE EXCAVATIONS OF THIS “INTACT” ROMAN CITY
- TAKE A HYDROFOIL EXCURSION TO THE ROMANTIC ISLE OF CAPRI

CORSICA

- VISIT THE MUSEUMS AND BIRTHPLACE OF NAPOLEON
- THE FAMED FESCH MUSEUM IS A TREASURE
- EXPERIENCE THE STUNNING BEAUTY OF THE LANDSCAPE
- ATV, HIKING AND OTHER ADVENTURE TOURS






MONTE CARLO

- TRY YOUR LUCK AT THE FAMED LE CASINO DE MONTE-CARLO
- MAKE THE SCENE AT THE CANNES FILM FESTIVAL
- TOUR THE CITIES OF EZE AND ST. PAUL DE VENCE
- VISIT THE CHAGALL AND PICASSO MUSEUMS IN NEARBY NICE
- WORLDS BEST SPA — LES THERMES MARINS DE MONTE CARLO

HOTELS & RESORTS



CRUISES

RESIDENCES

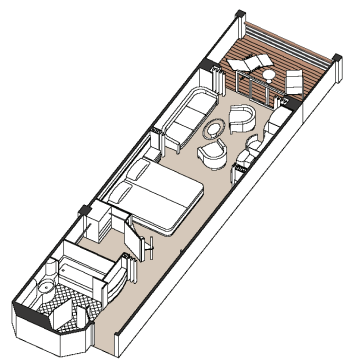
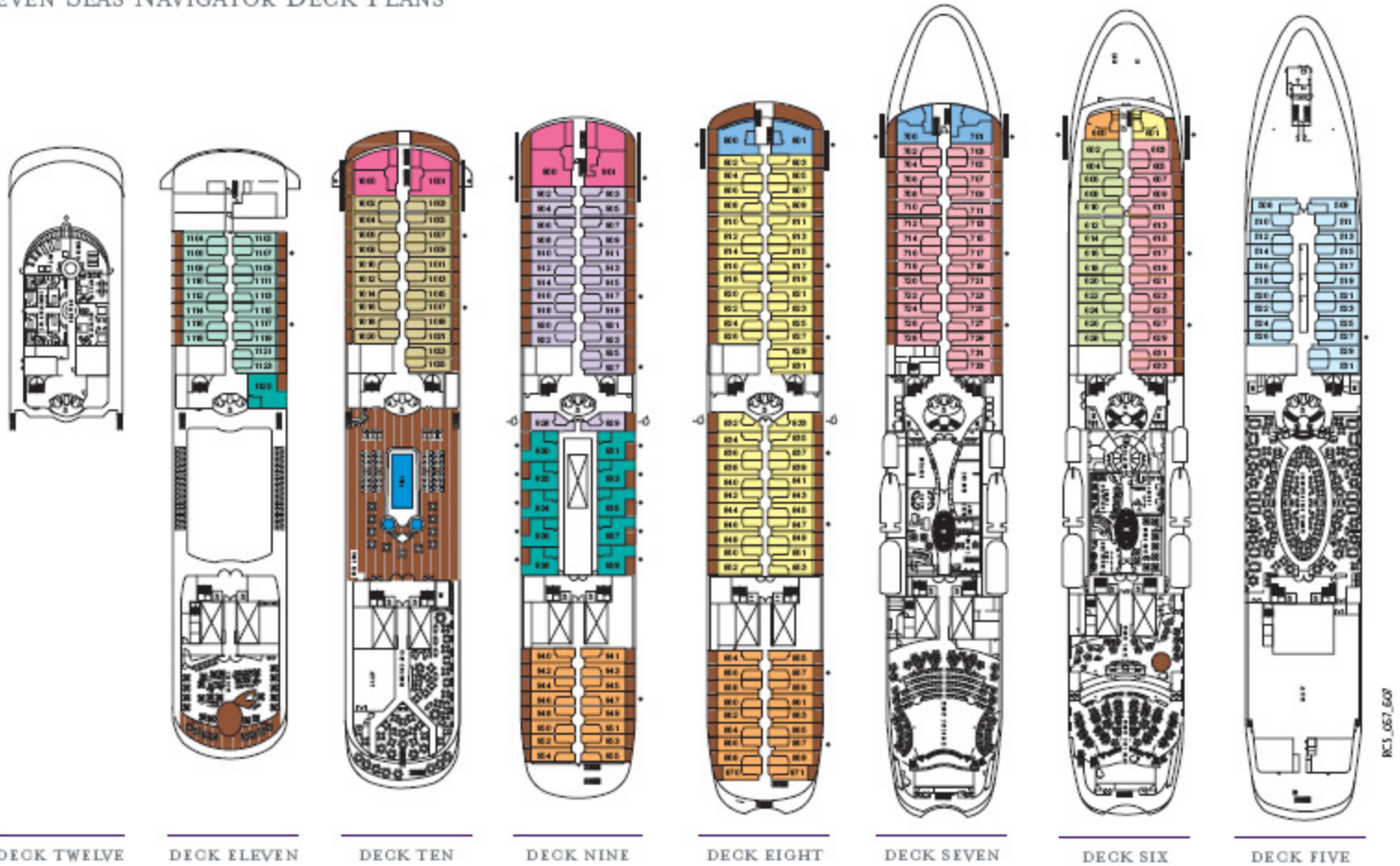
	CATEGORY	MS	MASTER SUITE
	CATEGORY	GS	GRAND SUITE
	CATEGORY	NS	NAVIGATOR SUITE
	CATEGORY	A	PENTHOUSE SUITE
	CATEGORY	B	PENTHOUSE SUITE

	CATEGORY	C	DELUXE SUITE
	CATEGORY	D	DELUXE SUITE
	CATEGORY	E	DELUXE SUITE
	CATEGORY	F	DELUXE SUITE
	CATEGORY	G	WINDOW SUITE
	CATEGORY	H	WINDOW SUITE

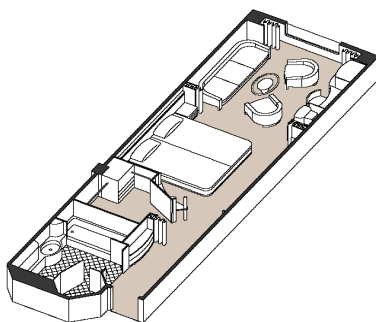
OVERALL LENGTH	560 FEET
GUESTS	490
OFFICERS/CREW	345 EUROPEAN/INTERNATIONAL
GUEST DECKS	8
GROSS TONNAGE	33,000
CRUISING SPEED	20 KNOTS
SHIP'S REGISTRY	BAHAMAS

● Three guest capacity suites  Wheelchair accessible suites 832, 833, 928, 929 have shower stall instead of bath tub  Connecting suites

SEVEN SEAS NAVIGATOR DECK PLANS



Balcony Suites:
 Cat. C-D &
 Cat. E-F
 356 Total ft²
 301 ft² interior
 55 ft² balcony



Window Suites:
 Cat. G-H
 301 ft² interior

The Regent Experience - Live The Luxury™

- Intimate ship setting offering custom experiences
- Among the highest space per guest ratios at sea
- Luxury Anichini bedding, duvets & pillows
- Flat-screen TV's & wireless internet access
- Ability to use cell phones while at sea
- Inclusive shipboard gratuities
- All-inclusive liquor package
- Single open seating and 24-hour room service